



## GET INVOLVED

Our supporters play a vital role in enabling local communities to transform the lives of children living on the edge.

From hosting a Cake Bake and taking part in challenges, to inspiring your workplace or school to fundraise, you can get involved and really **make a difference.**

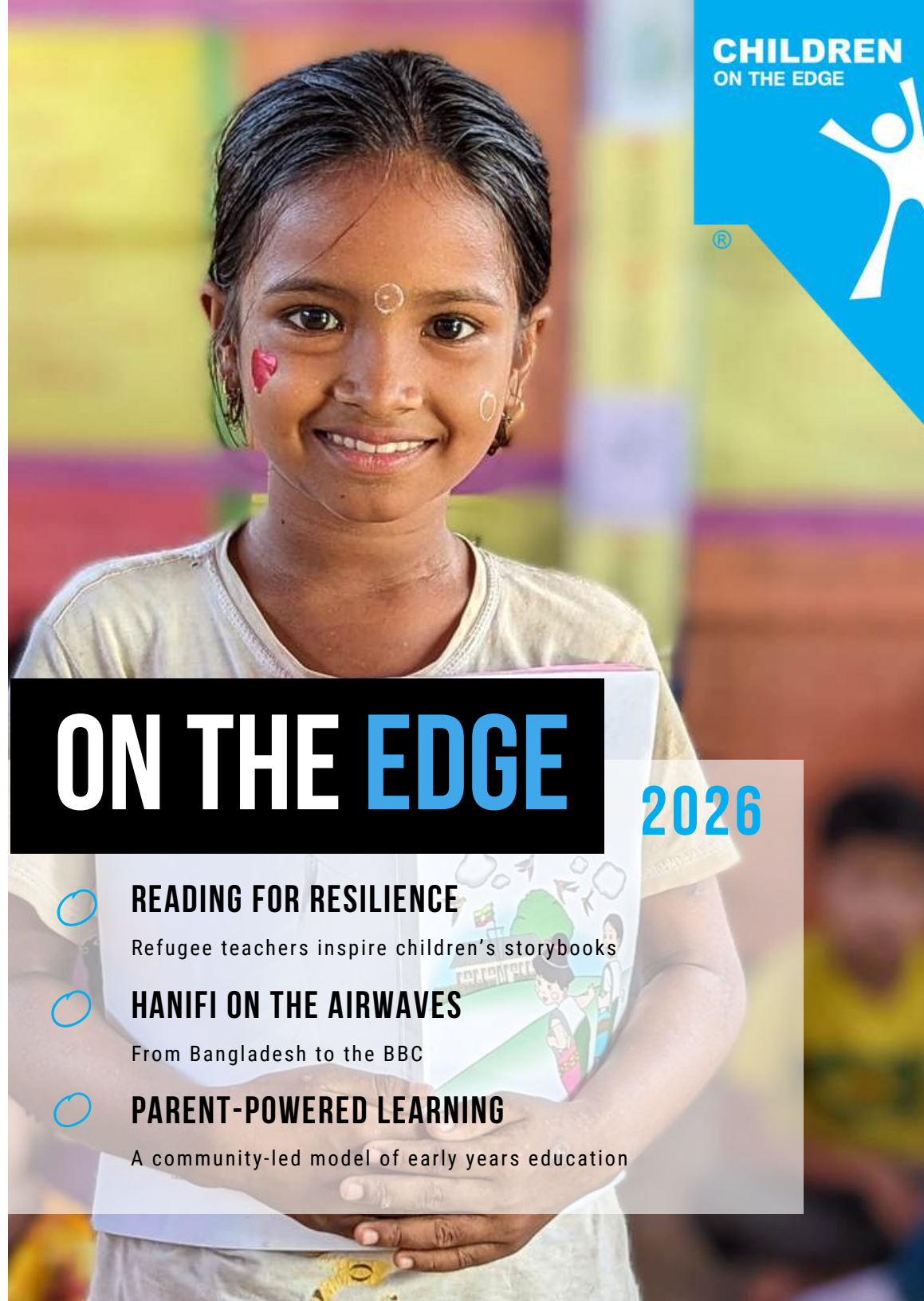
SCAN HERE



[www.childrenontheedge.org](http://www.childrenontheedge.org)  
[fundraising@childrenontheedge.org](mailto:fundraising@childrenontheedge.org)  
Registered charity no 1101441



Registered with  
**FUNDRAISING  
REGULATOR**



**CHILDREN**  
ON THE EDGE



# ON THE EDGE

2026

### READING FOR RESILIENCE

Refugee teachers inspire children's storybooks

### HANIFI ON THE AIRWAVES

From Bangladesh to the BBC

### PARENT-POWERED LEARNING

A community-led model of early years education





## MESSAGE FROM **RACHEL BENTLEY OBE**

*Our CEO and Co-founder*

**For more than three decades, Children on the Edge has existed to support the most marginalised children in some of the world's most difficult places.**

In recent years, a global economic downturn and growing instability have created huge challenges for international development. Yet, thanks to our dedicated supporters, we've held our ground. Our local partners have even celebrated exciting breakthroughs that have directly impacted the lives of the children they serve.

Our 35 years of experience have reinforced one key belief: the only lasting change is change driven by the community itself. We work with, learn from, and deeply invest in local people, rejecting quick fixes that can create dependency.

In a world often focused on rigid targets and fixed goals, we build flexible, organic partnerships with communities. This approach requires patience, as we know true progress isn't always a straight line.

We are deeply grateful for supporters who value both the small, subtle shifts and the dramatic breakthroughs that happen along the way.

On behalf of the children and communities we work with, I want to thank you. I hope you enjoy hearing their voices and stories in the pages to follow.

*Rachel*

Rachel Bentley OBE  
CEO and Co-Founder  
**Children on the Edge**



SCAN TO READ  
HOW WE HELP  
CHILDREN LIKE  
ADITYA TO BE  
SEEN AND HEARD.



## MEET **ADITYA**

**When children are seen and heard they can not only thrive as individuals but bring change to their communities.**

My name is Aditya Kumar. I'm 13 years old and I attend a learning centre for Dalit children in Patna, India, supported by Children on the Edge. I love my studies, but what I really love is our video newsletter, 'Moja Kids'.

I used to be shy, but now I'm always ready to be part of the action. The idea of being on screen excites me, and when I speak in front of the camera, I feel a surge of confidence. My friends and I are constantly thinking of new ideas, from dances to funny skits, which we can bring to life in our green room.

As a member of the Child Parliament, I also work to support the children in my community. It's my job to help them continue their learning and build a better future. I feel very happy and proud to be part of this.

## OUR WORK - A SNAPSHOT

*For every pound spent by Children on the Edge, 87p goes towards our programmes.*



**UK:**  
HEAD OFFICE



**UGANDA:** EARLY YEARS EDUCATION  
FOR CONGOLESE REFUGEE CHILDREN



KYAKA

**UGANDA:**  
COMMUNITY-DRIVEN  
CHILD PROTECTION



KARAMOJA



JINJA

**BANGLADESH:** EDUCATION AND SUPPORT FOR CHILDREN LIVING  
IN ROHINGYA REFUGEE CAMPS AND MARGINALISED COMMUNITIES



COX'S BAZAR



KUTUPALONG CAMP



BHASAN CHAR ISLAND

**AFGHANISTAN:**  
ONLINE EDUCATION  
FOR GIRLS CUT OFF  
FROM LEARNING



Herat



**MYANMAR:**  
EARLY YEARS  
EDUCATION FOR  
DISPLACED  
KACHIN AND  
KARENNI  
CHILDREN

**INDIA:** EDUCATION AND SUPPORT  
FOR DALIT CHILDREN IN BIHAR STATE





## READING FOR RESILIENCE

The powerful stories of two Rohingya refugee teachers we support in Kutupalong camp are now helping to shape a brand new series of books for displaced children around the world.

The experiences of Asmida and Senora in Bangladesh, are at the heart of the 'Read for Resilience' series by international literacy organisation NABU.

The collection is described as a 'growing library of stories designed to help children find strength, hope, and healing, especially those living through crisis.'

Books that look and feel familiar for children who have fled their home countries and cultures are rare, but every child deserves to see themselves in a story that reminds them they are not alone.

**"ASMIDA AND SENORA FEEL PROUD TO BE PART OF CREATING BOOKS THAT ENABLE REFUGEE CHILDREN TO SEE THEMSELVES, AND FEEL A SENSE OF BELONGING."**

**REBEKA KHATUN**  
MONITORING AND EVALUATION OFFICER  
BANGLADESH

In 2024, teachers Asmida and Senora gave extensive interviews, generously sharing their experiences of fleeing extreme violence and living in the world's largest refugee camp. They spoke about Rohingya culture and what life is like for children who have grown up as refugees in Banglaesh.

Their insights have been woven into the fabric of this new book series, inspiring and shaping the characters, settings, storylines, and even the illustrations.



## MEET EDRINE

From training with Children on the Edge to establishing local Child Protection Teams in his home district of Karamoja, Edrine's story is a powerful example of how community-led initiatives create lasting change from the ground up.

My name is Edrine, and I'm from Karamoja, a region in north-eastern Uganda facing immense challenges like poverty, violence, and famine.

Between the ages of seven and ten, I was homeless, living alone on the streets of Jinja city. Life as a street child was the worst thing anyone could experience, and I never want to see another child go through it.

As a young adult, I joined a Child Protection Team run by Children on the Edge Africa in Jinja. The training gave me the knowledge and confidence to advocate for street-connected children. Inspired, I moved back to my father's homeland of Karamoja, determined to help my own community.

Today, we have many Child Protection Teams here. They work with thousands of people and families to change mindsets and create a safe environment for children.

Local people are working together to get more children into school, stop trafficking, improve health and hygiene, and make sure everyone has enough to eat.

I have been filming interviews with community members about the changes we are seeing, including Nivea (pictured below), who was also a street child. Now, she's in school and a member of her Child Rights Club. Like me, she is now actively protecting other children from having to face what she went through.

**Watch here to see this transformation for yourself.**





## HANIFI ON THE AIRWAVES

Since 2009, Children on the Edge has been making learning possible for Rohingya refugee children in Bangladesh. In the last few years, we have introduced a revolutionary initiative allowing children to finally learn in their own language. **We were thrilled to have the story told through a BBC Radio 4 Appeal in October 2025, presented by actress Susannah Fielding.**

The broadcast told the story of Romaina, an 11 year old Rohingya girl who has been living in Kutupalong refugee camp with her family since fleeing the genocide in Myanmar in August 2017.

Romaina and her family speak the Rohingya dialect. This is the language she's grown up speaking and hearing, but until recently, lessons in the camp were only taught in Burmese, a language that both Rohingya children and their teachers can barely understand.

Romaina tried to write in class, painstakingly copying each letter, but not knowing the dialect, words simply didn't make sense. Lessons became a blur of unfamiliar sounds, and her learning was very slow.



This was until Children on the Edge introduced Hanifi, an alphabet created 40 years ago for the Rohingya language, but not used in the Kutupalong camp until now. For the first time, Romaina was being taught in a language she understood, learning an alphabet that matched her mother tongue. Within weeks, she was able to write her name on the board, a moment she says she won't forget, as her classmates applauded!



LIKE ROMAINA, 6,000 OTHER CHILDREN IN THE CAMP AND ON BHASAN CHAR ISLAND, ARE NOW USING HANIFI TO MAKE RAPID PROGRESS WITH THEIR STUDIES, LEARNING A LANGUAGE WHICH CONNECTS THEM TO THEIR CULTURE AND HERITAGE.

**LISTEN TO OUR RADIO 4 APPEAL**







## PARENT-POWERED LEARNING

In Uganda's Kyaka II refugee settlement, we support a community-led model of Early Childhood Education (ECE) for thousands of Congolese refugee children. Our 'Cluster Learning' approach provides small, play-based classes close to children's homes, and it's increasingly powered by parents themselves.

From the beginning, these programmes are community-driven, with the ultimate goal of sustainability. We've seen incredible engagement through monthly 'parent fun days' where mums and dads learn more about the value of play-based education.

Parents have also formed community savings groups to support their children's learning. These groups are thriving and have already saved significant sums with the goal of independently paying teachers' wages.

All of this is having a tangible impact on children's development. Many local primary school teachers have reported that children who attended cluster learning classes are more confident, have better social skills, are engaged in lessons, and have stronger learning habits compared to their peers who did not attend our provision.

An example of this is **8-year-old Esther** who loved attending cluster learning classes. When she graduated to primary school in 2024, Esther found she was already comfortable in the classroom. She now does well in her lessons, enjoys reading and writing, and interacts confidently with teachers and classmates.

**Alice Nyarkundo** is the education treasurer for her community savings group and her daughter Blessing attends cluster learning classes. Alice believes that the savings groups have united parents and allowed them to work together.

"I ENCOURAGE ALL PARENTS TO ACTIVELY TAKE PART IN SUPPORTING OUR PRE-SCHOOL. TOGETHER, WE CAN MAKE A BETTER FUTURE FOR OUR CHILDREN."

**ALICE NYARUKUNDO**  
KYAKA II REFUGEE SETTLEMENT  
UGANDA





## SURVIVING IN JUNGLE AND MOUNTAIN CAMPS

**When crisis strikes, Children on the Edge is quick to respond, supporting the most marginalised children and communities.**

As a small and agile organisation, we can react swiftly to emergencies like war, natural disasters, and violence, always with respect for the communities we serve.

In war-torn states like Kachin and Kayah, Myanmar, families live with intense fighting and regular attacks. They are surviving in one of the world's most unreported wars, where ongoing conflict has displaced over three million people. It is the children who bear the brunt of this violence.

Displaced families have fled to remote camps, often in mountains or jungles, but remain at risk daily. Communities dig bunkers around preschools and do their best to provide for their children despite being cut off from income and basic supplies. Those living at high altitudes often face sub-zero temperatures.

We work with local partners to provide early years education for over 800 children in these areas. We also ensure that displaced communities have access to essential warm clothes, food parcels, and extra preschool nutrition when needed.

"WHEN I AM AT SCHOOL, I SING AND DANCE TOGETHER WITH MY FRIENDS. I HAVE A GOOD MEAL AND A SNACK EVERYDAY, AND WE ALWAYS HAVE A SLEEP AT NOON.

I AM VERY HAPPY TO HAVE RECEIVED NEW WARM CLOTHES AND TOYS TO PLAY WITH. THANK YOU AND MAY GOD BLESS YOU ALWAYS. I HAVE NOT CRIED ONCE SINCE THE VERY FIRST OPENING DAY OF SCHOOL."

**DUNDAW SENT ING MAI  
MAGA YANG PRESCHOOL CENTRE  
KACHIN STATE, MYANMAR**

The work we support here is driven by local communities, who work hard to maintain the preschools, support their teachers, and enrich their children's learning with homemade resources and nutritious meals.



# FROM CLASSROOMS TO FOOTBALL PITCHES

During Refugee Week children learned about what it means to have to flee your home and how they could help support some of the most marginalised refugee children. The week culminated in some really creative and exciting fundraising initiatives.

The **March CE Primary School** in Chichester raised £60 with their cake sale. **St James' Primary School** in Emsworth raised nearly £400 with their 'Enterprise Day' and students from **Thorverton Primary School** took on their annual 'Run for Refugees' with energy and enthusiasm, raising an amazing £1,050.

**We love visiting schools and clubs to speak about our work, either in person or virtually. Get in touch to arrange a speaker for your next assembly or event.**

**Last summer eighteen local lads set off to Henningsvaer, Norway to play football at the world's most spectacular pitch, deep into the Arctic Circle.** Along their epic journey they played five football matches in five countries, in five days, in memory of James Palmer-Bullock, raising more than £25,000 for Children on the Edge and The Sussex Snowdrop Trust.



To mark his 70th birthday, **Keith Rose walked the iconic 190-mile 'Coast to Coast' path**, raising £1,145.

**COULD YOU SUPPORT  
CHILDREN ON THE EDGE**

**THIS YEAR?** *We'd love to have you involved.*



## LEAVING A LASTING LEGACY

**Leaving a gift to Children on the Edge in your will is a way of leaving a legacy of safety, education and resilience for children for many years to come. No gift is too small to make a difference.**

It might be a small cash gift, or a residual gift from your estate after you have made provision for your family. In the last few years we have been humbled to receive a significant legacy gift each year, and we are deeply thankful for five further supporters who have contacted us to let us know they have planned a gift in their will.

Kim\* volunteered with Children on the Edge for a number of years at our events. As well as including specific gifts for family and friends in her will, she also left a gift for Children on the Edge.

Kim's generosity continues to have a ripple effect; helping to create spaces for 100 children to learn, play and grow every year for the next 5 years.

**"IF YOU THINK YOU'RE TOO SMALL  
TO HAVE AN IMPACT, TRY GOING  
TO BED WITH A MOSQUITO."**

**DAME ANITA RODDICK  
CO-FOUNDER OF CHILDREN ON THE EDGE**

*To find out more, get in touch at:*  
**[fundraising@childrenontheedge.org](mailto:fundraising@childrenontheedge.org)**

\*All our legacy donors' names have been changed to protect their identity.